



DOOR SIZES

- Up to 16' x 24' (Bi-Parting)
(Other sizes available – consult factory)

SPEED

- Up to 125" per second (Bi-Part)

STANDARD FEATURES

- Opening Speed Up To 125" Per Second
- 4" Panel Thickness – R17, with a Compressible Close Cell EVA Foam Core
- White Thermoplastic Flexible Panel Outer Shells
- Polyurethane Elastomer Perimeter Panel Edges
- Full Perimeter Adjustable Gasket Seals
- Heavy-Duty Galvanized "Down and In" Track System
- Manual Panel Release Capability
- NEMA 4X Panel with Self Diagnostic Controller with HMI Display and E-Stop Button Included
- Standard Open/Close/Stop through HMI
- Time Delay Closing
- (2) Sets Of Through Beam Reversing Photo-Eyes
- Five-Year/One Million Cycle Limited Warranty on Mechanical Components And Door Controller
- Five-Year/Unlimited Cycle Warranty on EVA Foam Panels

ALBANY

RS2400 Cooler

RAPID SLIDING DOORS

HIGH SPEED

With door opening speeds up to 125" per second, the Albany Rapid Slide series redefines productivity. Providing full opening access in less than one second, the Rapid Slide series achieve the highest levels of energy cost savings of any door on the market.

ENERGY EFFICIENCY

The Albany Rapid Slide utilizes a flexible panel technology with up to R41 insulation. This insulation combined with energy efficient integrated heat systems allows the Rapid Slide door series to provide the lowest operational electric costs.

UNMATCHED STRENGTH & DURABILITY

Flexible thermoplastic outer shells combined with polyurethane edge seals provide a seamless panel. Compressible EVA foam allows for superior impact capability and ultimate damage resistance.

ULTIMATE SEALING

Distinctly different than fabric doors, the Rapid Slide provides unparalleled high compression full perimeter sealing. With a standard "up and out" track system, door panels are released from gaskets as the door slides.

MAINTENANCE COST SAVINGS

The Rapid Slide series of doors are designed for high cycle, high-speed continuous operation. Seamless track systems, polyurethane rollers, impact capable panels, all combine to provide your facility low maintenance requirements.

QUALITY CONTROL

With the combination of speed, tight sealing and high insulation value, the Rapid Slide door ensures your environments maintain the highest quality standards.

ELECTRICAL CONTROLS

- High Speed electromechanical operator
- 120/230 single phase or 460/three phase
- Encoded self-calibrating limit position
- Standard motor/encoder IP66 rated
- NEMA 4X control enclosure with HMI

CONSTRUCTION

- Full perimeter adjustable gasket seals
- Heavy-Duty galvanized steel track system
- Close Cell EVA Foam Core with R17 to R41 Insulation
- Flexible Thermoplastic Outer Shell (White or Blue)
- Polyurethane Elastomer Edge Seal

STANDARD ACTIVATION & REVERSING FEATURES

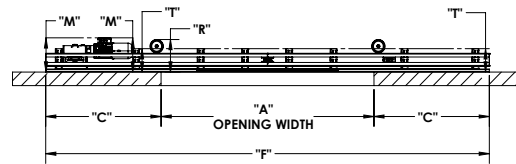
- Standard Open/Close/Stop through HMI
- Two (2) pair of send & receive photo-eyes

WARRANTY SUMMARY

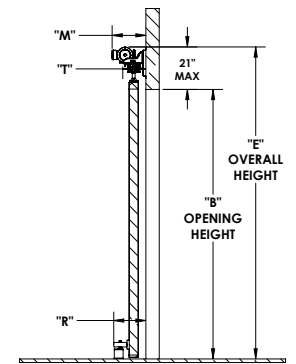
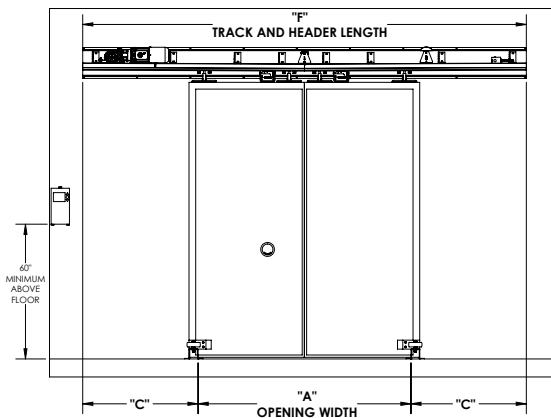
- Five-year/One million cycle limited warranty on mechanical components and door controller
- Five-year/unlimited cycle warranty on EVA foam panels

OPTIONS

- Manual operation
- Stainless steel construction
- Panel thickness
- Multiple activation selections



	"M"	"T"	"R _s "	"R _c "
4" PANEL (R17)	15.25	10.5	14.5	11.75
6" PANEL (R25)	16.25	10.5	16.5	13.75
8" PANEL (R32)	17.75	13.75	18.5	15.75



Founded in 1895 as Albany International in the USA, Albany began manufacturing the first high-performance roll door in 1963. Today, Albany is the world leader in the production of high-speed and high-performance doors. Providing sophisticated products that are designed for a wide range of applications in various industries, Albany remains the original high-performance roll-up door.

Door specifications and technical data subject to change without notice.

© ASSA ABLOY. ALL RIGHTS RESERVED. Part of ASSA ABLOY.

ACB-RS2400C-0124

ALBANY

133850 101 Street, Ste B,
Kenosha, WI 53142
P: 1-800-459-1930
www.albanydoors.us