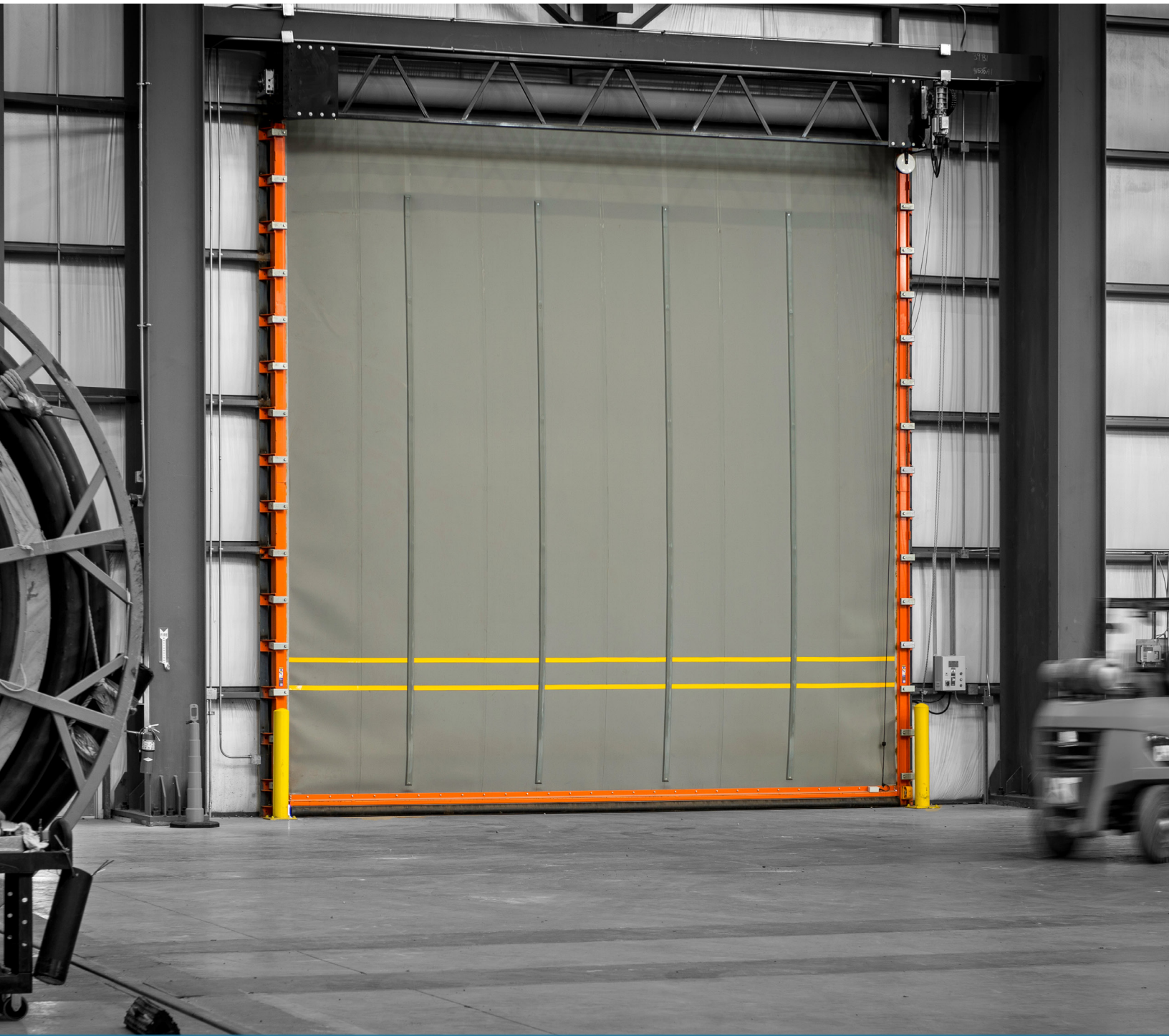


# ALBANY UltraTough

TOUGH AND RUGGED PERFORMANCE



Roll up doors at your service  
[www.albanydoors.us](http://www.albanydoors.us)

ALBANY 



# ALBANY UltraTough

TOUGH AND RUGGED PERFORMANCE

## Durable. Strong. Safe.

This high performance rubber door is designed for harsh and abusive environments. The UltraTough has heavy-duty side frames, ultra-strong rubber panel, and patented windlok guide system that provides resiliency against damage and extreme weather. This door is ideal for rugged applications like mining, natural resources and manufacturing facilities.

Hood and gussets shown are optional.

## WHY OUR DOOR

### Designed to Take a Hit

- Features a tough panel and patented windlok system to withstand accidental impact, extreme weather and winds of up to 88 mph and remain operational.
- Chemical and corrosion resistant heavy-duty steel side frames are self-supporting and ensure durability in harsh environments.
- Offers an aluminum **wind bar** that runs along the full width of the door and is attached to the drumroll, providing high wind resistance even on larger doors by staying at the midpoint of the door during opening.

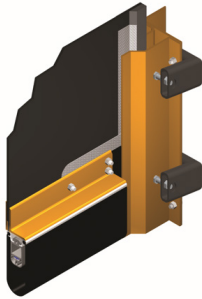
### Ultra Tight Seal, Ultra Safe

- Creates a near airtight seal to help protect people and materials from exposure to extreme weather and contaminants.
- Combined with opening speeds of up to 36 in/sec, the seal allows you to increase productivity, maintain climate control and reduce energy costs.
- Lower the chances of accidental impact with optional sensing devices like photo eyes and a light curtain that reduces the chances of objects coming in contact with the door.

Wind bar option for heavy wind loads

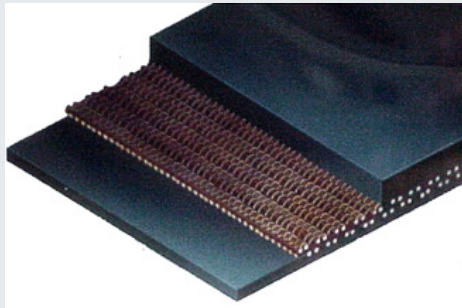


## Doors You Trust. Features You Can Count On.



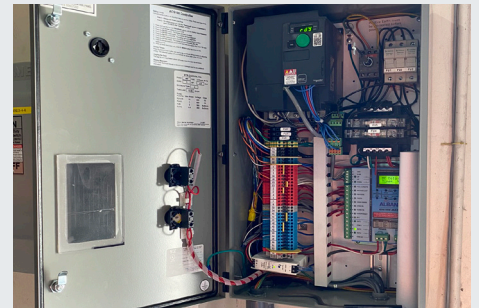
### Patented Windlock Design

Advanced continuous windlok and guide system allows the door to resist high wind pressure of up to 88mph. Optional wind gussets rate up to 110mph.



### Heavy-Duty Panel

Thick, 2-layer SBR and high tensile strength rubber panel features durable construction with self-supporting steel side columns and header.



### Modular Industrial Design

The new and improved ACS 100 control panel features multiple activation and a streamlined system for reliable and smooth operations.

## The Albany Difference

From the inventors of the original Rapid Roll™ door, Albany High Performance Doors are strong, fast, and safe. With simplicity in design, few moving parts, and speed, our rapid roll doors maximize productivity and savings for our customers. Companies count on Albany due to our decades of experience, superior performance and products, and the global leader in entrance automation that stands behind us, 4Front Engineered Solutions.

### DOOR CHARACTERISTICS

Door Dimensions	Minimum: 8'W x 8'H Maximum: 30'W x 30'H
Opening Speeds	Up to 36 in/sec
Sensing Devices	Photo eye (Standard) TruckGuard light curtain (40 through-beam optical sensors)
Door Panel	2 layers of Styrene Butadiene Rubber (SBR) with polyester cord center Optional EPDM & MSHA
Wind Resistance	Windlok & guide system: 88 mph (20 psf) Wind gussets: 110 mph (30 psf)
Control & Drive System	Input voltage: 208-240 V, 440-480 V, 575-600 V, 3 phase 3.35-Hp, 3 phase, 60 Hz ACS100 NEMA 4/12 cUL listed

### DOOR COMPONENTS

Springless system	Direct drive unit
Manual egress	Chain hoist
Side frames	Self-supporting, heavy-duty painted steel
Idler	4" diameter, 0.134" tube Or 4 1/2" diameter, 0.134" tube
Door Roll	8 5/8" diameter, 0.188" thick tube complying with ASTM A513
Bottom bar	Steel construction

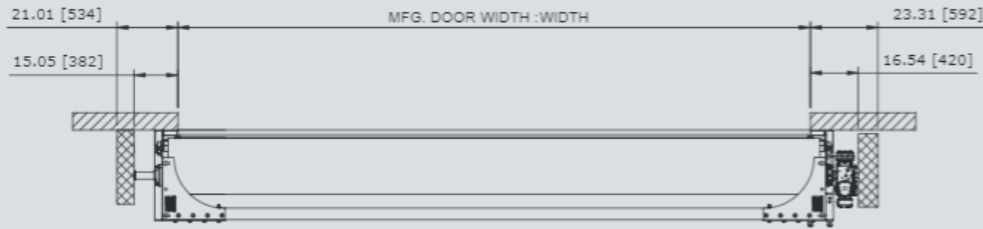
We offer various options and actuation devices  
\*Optional



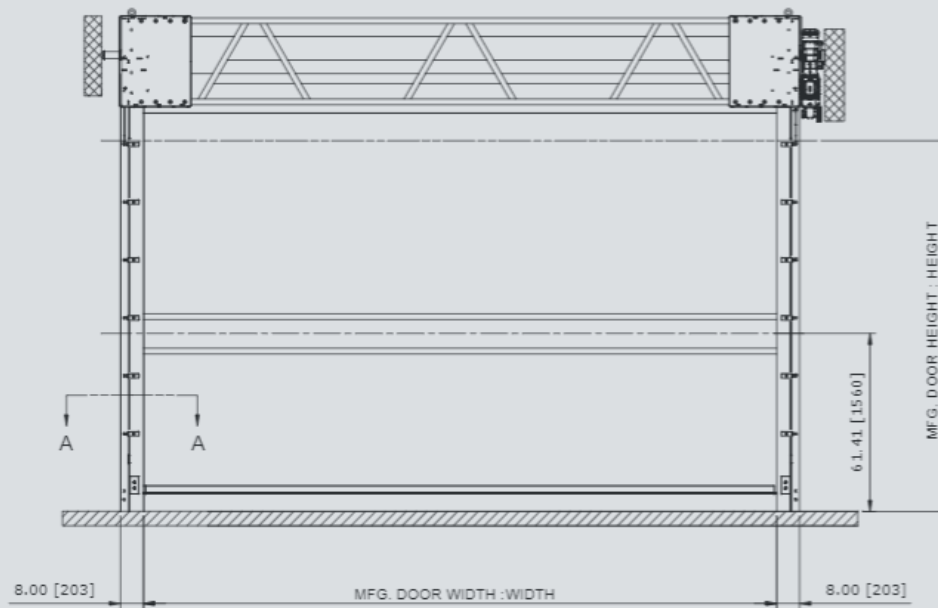
# UltraTough

TOUGH AND RUGGED PERFORMANCE

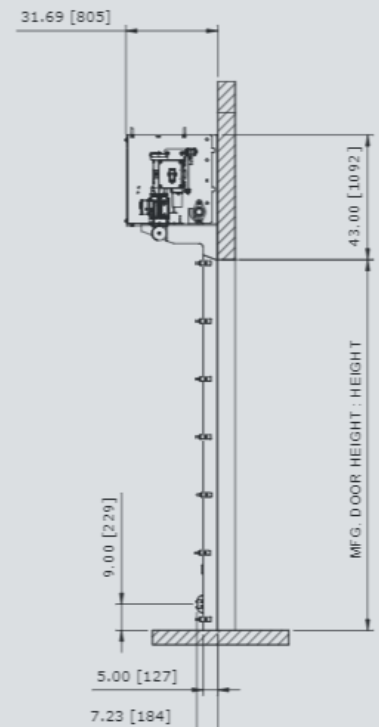
RECOMMENDED FOR  
MAINTENANCE.



TOP VIEW



FRONT VIEW



RIGHT VIEW

43" HEADROOM UNBALANCED DIRECT DRIVE NO COVER RH

CONTROL PANEL:  
CONTROLS

Founded in 1895 as Albany International in the USA, Albany began manufacturing the first high-performance roll door in 1963. Today, Albany is the world leader in the production of high-speed and high-performance doors. Providing sophisticated products that are designed for a wide range of applications in various industries, Albany remains the original high-performance roll-up door.

Door specifications and technical data subject to change without notice.

© ASSA ABLOY. ALL RIGHTS RESERVED. Part of ASSA ABLOY.

# ALBANY

935 Campus Drive  
Mundelein, IL 60060  
P: 1-800-459-1930  
[www.albanydoors.us](http://www.albanydoors.us)