

# ALBANY RR300 Chill/Freeze

FREEZE ENERGY COSTS AND INSULATE YOUR BOTTOM LINE



Roll up doors at your service  
[www.albanydoors.us](http://www.albanydoors.us)

ALBANY 

# ALBANY RR300 Chill/Freeze

## Fast. Reliable. Energy Efficient.

The Albany RR300 Chill and RR300 Freeze are essential for cold storage facilities, combining fast speeds and a reliable thermal barrier to help protect product quality in critical temperature zones. The **RR300 Chill** is ideal for high traffic areas with temperatures above 32°F, while the **RR300 Freeze** is optimal for dual-climate facilities where temperatures up to -20°F open into ambient temps. Our simple design features few moving parts for minimal maintenance.



## WHY OUR DOOR

### Ultra High Speed

- Opens at up to 130" per second to help minimize energy loss, increase productivity, and reduce maintenance and energy costs.
- Helps protect product quality in critical temperature zones and improves the overall performance of your building.

### Superior Defrost & Insulation Systems

- Offers one of the widest range of defrost options on the market, including articulating fans and high velocity, high volume blowers with and without heat.
- Outfitted with sophisticated cellular insulated panel that minimizes ice and frost build up, ideal for cooler, freezer and extreme temperature facilities that see high traffic.

### Simple and Safe Design

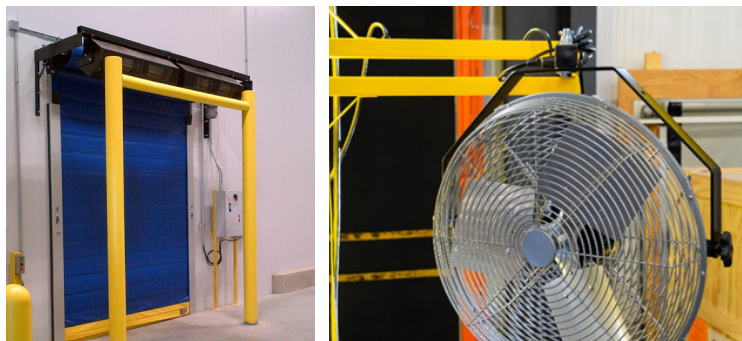
- Features a simple design with few moving parts, for a product that is not only low maintenance but also rugged and reliable.
- Equipped with safety features like our light curtain and reversing edge, padded bottom bar and optional sensors to help prevent accidents and damage.





## The Albany Difference

From the inventors of the original Rapid Roll™ door, Albany High Performance Doors are strong, fast, and safe. With simplicity in design, few moving parts, and speed, our rapid roll doors maximize productivity and savings for our customers. Companies count on Albany due to our decades of experience, superior performance and products, and the global leader in entrance automation that stands behind us, 4Front Engineered Solutions.



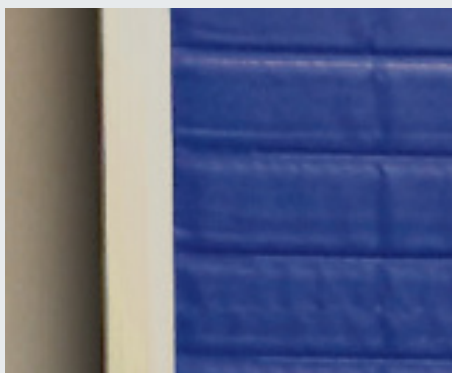
Choose from our wide range of defrost systems.

## Doors You Trust. Features You Can Count On.



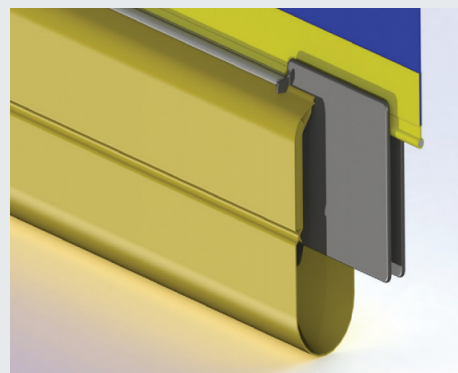
### Modular Industrial Design

New and improved ACS 100 control panel and motor system features multiple activation for reliable operations. It's all in one, including the defrost system.



### Dual Weather Seal

Double weather tight seal around the entire door frame reduces energy loss and maintains climate control, improving air filtration in cold storage areas.



### Break Away Bottom Bar

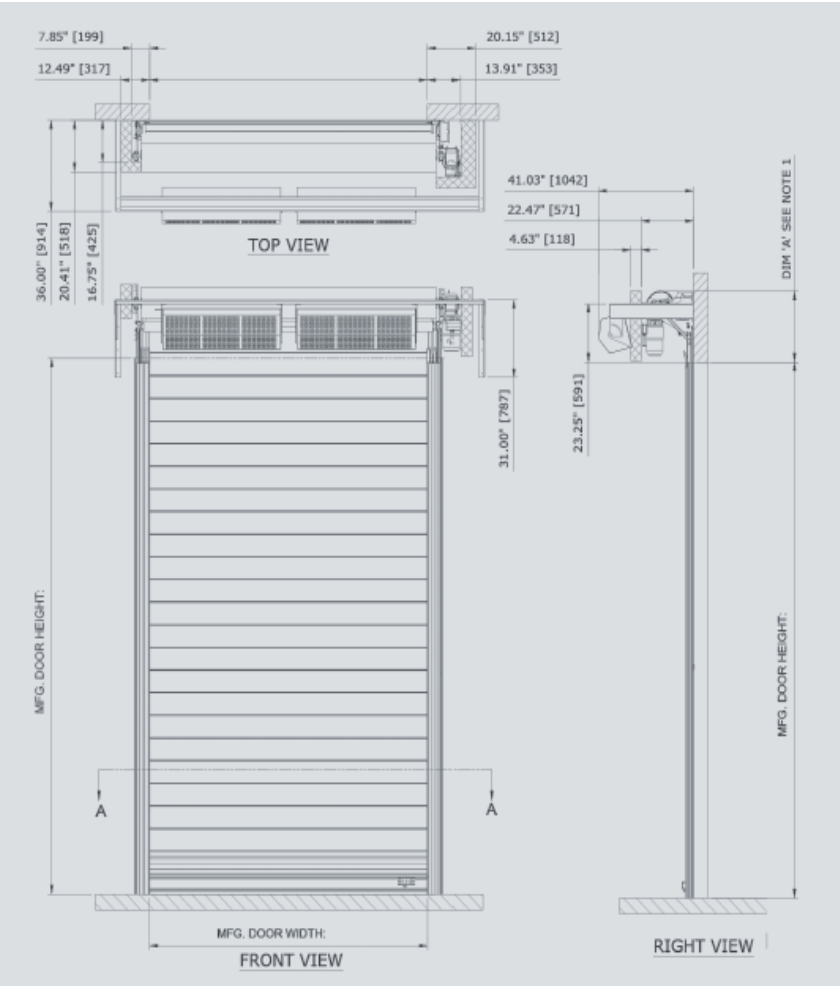
Padded, break away bottom bar reinserts itself after being dislodged with the push of a button, helping reduce maintenance costs and helping prevent accidents.



## Solutions to Fit Your Every Need

"The Albany RR300 Chill and Albany RR300 Freeze doors are a significant contribution to the functionality of our facility. The automated doors make it extremely easy for the staff to quickly move donated food off of trucks and directly to the cooler or freezer. About 60 percent of Second Harvest's donated food is perishable and the majority of the donated food handled by our organization will pass through the cold storage space. Further, the automated doors will help us conserve energy and maintain the proper temperature in the cold storage areas."

-Jason Clark, president and CEO of Second Harvest



### TECHNICAL INFORMATION

Door Dimensions	Minimum: 3'W x 7'H Maximum: 12'W x 20'H
Operating Speed	Opening: Up to 130 in/sec* Closing: Up to 24 in/sec
Sensing devices	Wireless electric contact edge, through-beam photo eye, light curtain
Door Panel	Panel Material: Cimatex - 22oz composite vinyl panel sections hot welded with 3 layers of double reflective, heavy duty polyethylene air pocketed insulation Easy Reset feature at the push of a button
Door Components	Low profile anodized aluminum side frame Insulated, padded bottom bar Extruded aluminum top roll with steel axles
Defrost Systems	Blower options: Articulating fans, high volume with or without heat Mounted options: Front, under header, side mount low volume
Control and Drive System	Control Panel: ACS 100 Input Voltage: 208-240V, 440-480V, 575-600V Motor Size: Up to 3-Hp, 3 phase, 50/60 Hz Limits Adjustments: At keypad interface Controls Environmental Rating: NEMA-4 Motor Environmental Rating: IP-55

\*Speed will vary with door size  
We offer various options and actuation devices for all high-performance door products



Founded in 1895 as Albany International in the USA, Albany began manufacturing the first high-performance roll door in 1963. Today, Albany is the world leader in the production of high-speed and high-performance doors. Providing sophisticated products that are designed for a wide range of applications in various industries, Albany remains the original high-performance roll-up door.

Door specifications and technical data subject to change without notice.

© ASSA ABLOY. ALL RIGHTS RESERVED. Part of ASSA ABLOY.

# ALBANY

935 Campus Drive  
Mundelein, IL 60060  
P: 1-800-459-1930  
www.albanydoors.us