

ALBANY RR300

THE MODULAR HIGH PERFORMANCE DOOR



Roll up doors at your service
www.albanydoors.us

ALBANY 

ALBANY RR300

THE MODULAR HIGH PERFORMANCE DOOR

Fast. Durable. Safe.

This high performance door features advanced high-speed technology that's synonymous with reliability. The RR300 is ideal for environmental separation and reducing downtime. As one of the most versatile doors on the market, it's easy to maintain and is suited for a wide variety of applications, like high traffic areas, hygienic spaces and high pressure zones.

WHY OUR DOOR

Ultra High Speed

- Opens at up to 80" per second to keep traffic moving in your facility, while helping to prevent damage from accidental impact.
- Helps increase productivity, maximize energy savings and reduce operational costs.

Simple Design, Easy Maintenance

- Features a simple design and few moving parts for less maintenance and downtime, and the RR300's small footprint allows for easy installation and custom configuration.
- With the easy reset feature, this durable door can hold up against accidents. If hit, simply press a button, and you're back in business with minimal maintenance.
- Hassle-free side guides do not require lubrication for easy use of the door.

Smart & Safe Operation

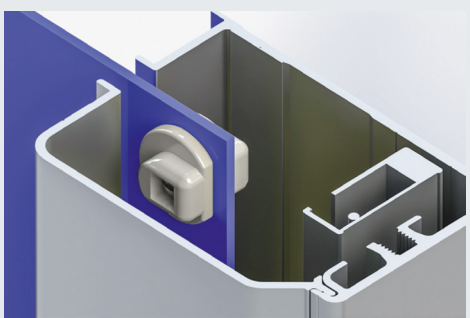
- Reliable sensing devices, like light curtains and photo eyes, help eliminate contact with objects in the doorway.
- Keep traffic moving in your facility with our modular door design featuring touch-free operation and multiple activation.



Doors You Trust. Features You Can Count On.

The Albany Difference

From the inventors of the original Rapid Roll™ door, Albany High Performance Doors are strong, fast, and safe. With simplicity in design, few moving parts, and speed, our rapid roll doors maximize productivity. Companies count on Albany due to our decades of experience, superior performance and products, and the global leader in entrance automation that stands behind us, 4Front Engineered Solutions.



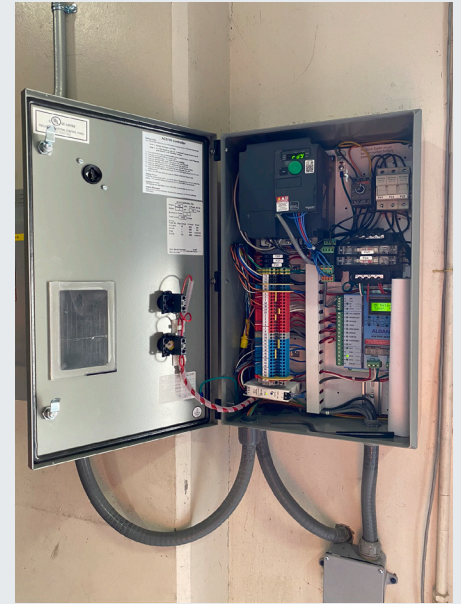
Superior Seal & Panel

Fast, quiet operation is easy with our captured panel. Keep out debris with a tight seal that forms the ideal barrier between environments, providing climate control.



Compact, Modular Design

Features a small footprint for versatile installation possibilities. The modular design has wind ribs, and sections of the door can be replaced rather than the entire curtain if damaged.



Industrial Panel Design

Control what you need with the new and improved ACS100 control panel, featuring multiple activation and a reliable, streamlined process to keep traffic moving in your facility.

DOOR CHARACTERISTICS

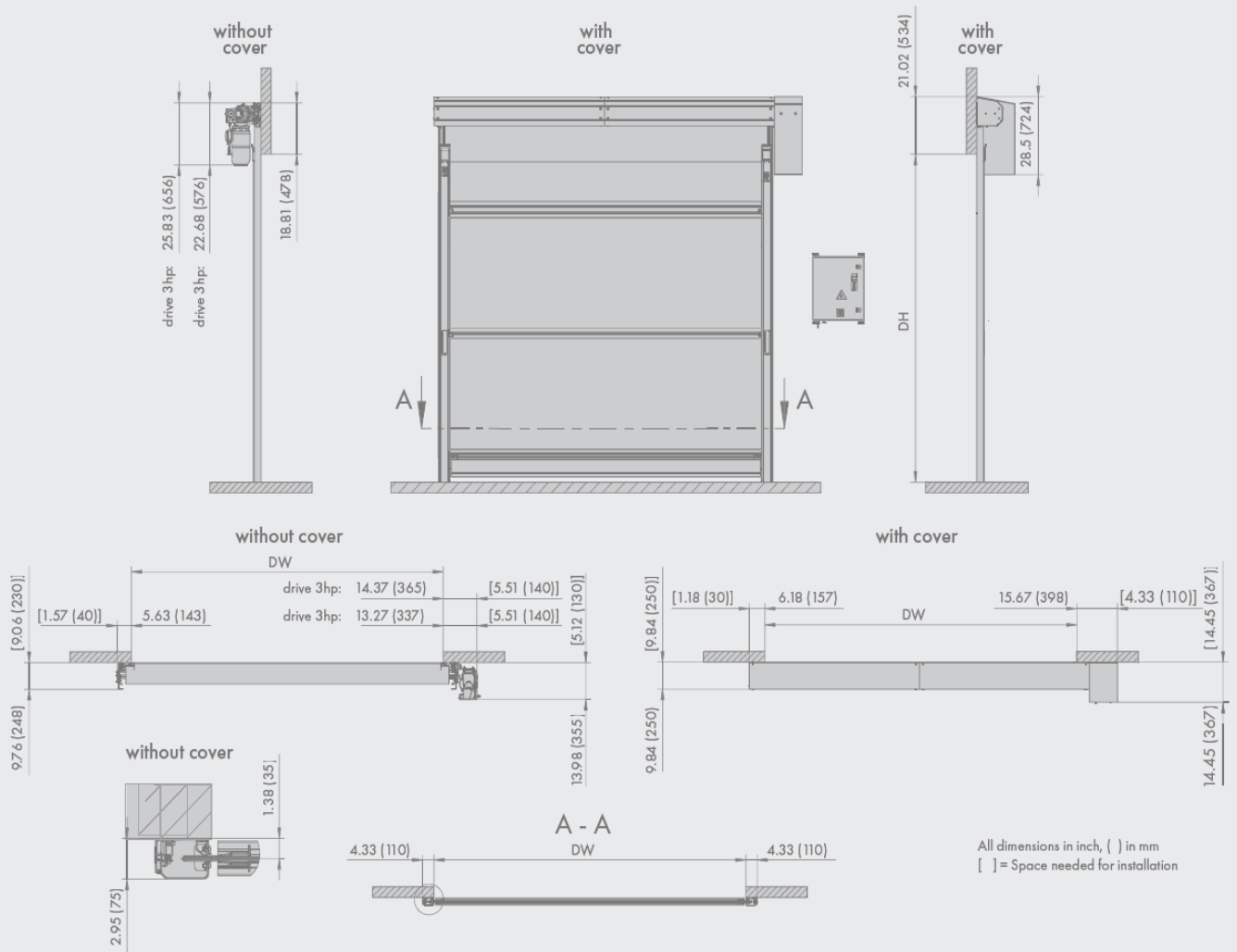
Door Dimensions	Minimum: 3'W x 3'H Maximum: 14'W x 14'H
Operating Speed	Opening: Up to 80 in/sec Closing: ~24 in/sec
Sensing Devices	Wireless electric contact edge, through-beam photo eye, light curtain
Door Panel	Self-repairing breakaway <70 dBA operating noise UL508A applicable agency approvals Captured panel: 2-ply PVC fabric with wind knobs (RollTex and 40 oz. vinyl) Optional wind ribs with replaceable full-width vision panels
Wind Resistance	Static wind load: Up to 50 mph Static pressure load: Up to 6 psf
Door Components	Low profile anodized aluminum side frame Padded aluminum bottom beam with high-visibility yellow loop seal Extruded aluminum top roll with steel axles
Roll & Motor Cover Construction	12 gauge steel powder-coated black (RAL 9005)

CONTROL AND DRIVE SYSTEM

Control Panel	ACS100 Controller
Voltage Options	*208V 3Ø (± 10%) 230V 3Ø (± 10%) 460V 3Ø (± 10%) *575V 3Ø (± 10%)
Motor Size	Up to 2.0hp helical-worm gear motor
Warranty Terms	5-years / 1 million cycles on drive motor; 2 years all other mechanical & electrical
Operating Temperature Range	Standard 40°F - +110°F (4°C - +43°C) *Extended 32°F - +140°F (0°C - +60°C)
Controls Environmental Rating	NEMA-4
Motor Environmental Rating	IP-55

We offer various options and actuation devices
*Optional





AVAILABLE SIZES

	DW	DH
min:	3ft (914)	3ft (914)
max:	14ft (4267)	14ft (4267)

Solutions to Fit Your Every Need

The Problem:

Air Design in Cuernavaca, Mexico creates beautifully-crafted external elements to make cars more aerodynamic, improving speed and fuel efficiency. Air Design needed a door that could protect the high-quality product they're known for. They paint aerodynamic parts for high-end international carmakers and they need to ensure that no dust particles enter the paint booths.

Our Solution:

Albany provided Air Design with three RR300 doors that are perfect for protecting Air Design's superior products.

- Fast opening speeds and a one-second delay upon closing keep dust in the factory from entering the paint booths.
- When closed, the door's super tight, double seal protection around the perimeter prevents air and dust from seeping in.
- The light curtain safety sensors recognize when a person or object is in the doorway, preventing products from getting damaged.

Founded in 1895 as Albany International in the USA, Albany began manufacturing the first high-performance roll door in 1963. Today, Albany is the world leader in the production of high-speed and high-performance doors. Providing sophisticated products that are designed for a wide range of applications in various industries, Albany remains the original high-performance roll-up door.

Door specifications and technical data subject to change without notice.

© ASSA ABLOY. ALL RIGHTS RESERVED. Part of ASSA ABLOY.

ALBANY

935 Campus Drive
Mundelein, IL 60060
P: 1-800-459-1930
www.albanydoors.us