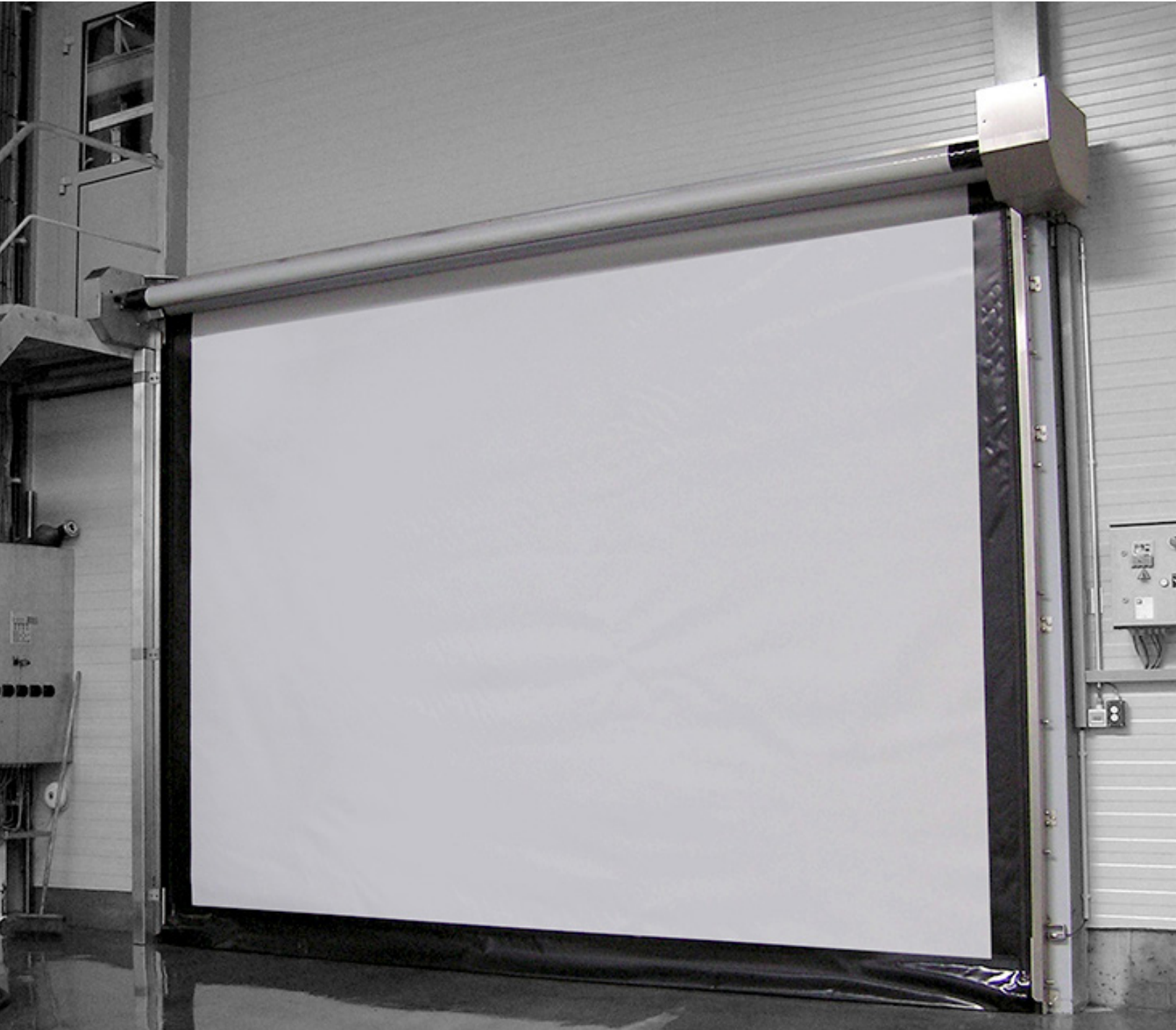


ALBANY HS Series

STAND UP AGAINST HIGH WINDS AND PRESSURE



Roll up doors at your service
www.albanydoors.us

ALBANY 

HS8010P & HS8020P

STAND UP AGAINST HIGH WINDS AND PRESSURE

Fast. Energy Efficient. Safe.

These high performance doors are designed for facilities that experience high wind and pressure loads. Our push-pull technology sets these doors apart, eliminating components found in gravity doors and creating a faster total cycle time. The HS Series is different than any competitive product, improving operation, energy efficiency, and wind load capacity. Reduce energy costs and down time due to maintenance, while increasing safety and efficiency.

Hoods and motor cover shown are optional.

WHY OUR DOOR

Faster Cycle Time for Energy Efficiency

- Receive faster overall cycle time thanks to our superior **push-pull design**: Gears on each side of the door engage with zipper-like teeth of the curtain, creating tension and faster cycle.
- Opens at up to 96"/second and closes at up to 48"/second to enhance traffic flow and improve operations, while limiting air infiltration.

Maximum Wind Resistance

- Offers a practically perfect seal that helps the door remain operational even under high wind pressures, reduce air infiltration and energy costs.
- Uses side guides formed of galvanized steel with pivoting, spring loaded UHMW inner side guides, allowing for movement under pressure.
- Choose **HS8020P** for extreme wind loads of up to class 5 (EN12424) or 110 mph.

Smooth & Safe Performance

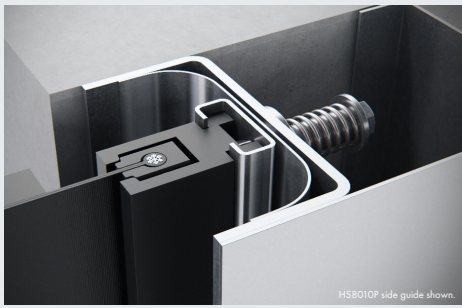
- Features PVC curtain and soft bottom technology to help protect people and products. Auto-reset feature minimizes downtime and keeps traffic flowing.
- Help protect employees and products with wireless bottom edge and photo eye sensing devices, which reverse door on contact.

Hoods and motor cover shown are optional.

Yellow bottom edge is optional.

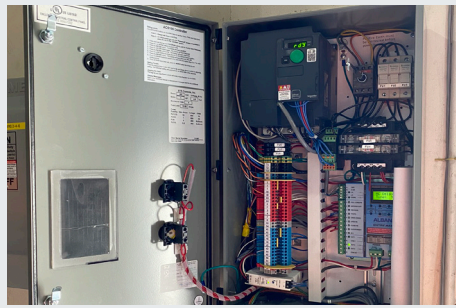


Doors You Trust. Features You Can Count On.



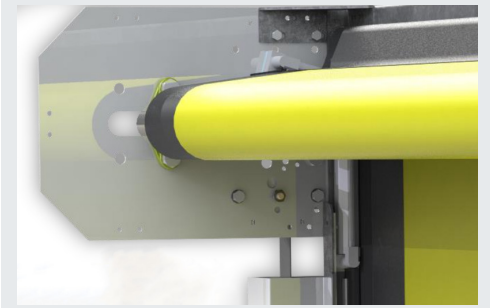
Innovative Side Column

The HS series curtain can run smoothly even under pressure thanks to its pivoting side column, keeping the curtain in the same plane and enhancing durability.



Modular Industrial Design

The new and improved ACS 100 control panel and motor system features multiple activation and a streamlined system for smooth, reliable operations.



Push-Pull Technology

Advanced push-pull technology incorporates a gear drive system to provide faster total cycle time while eliminating conventional wind stiffeners.

The Albany Difference

From the inventors of the original Rapid Roll™ door, Albany High Performance Doors are strong, fast, and safe. With simplicity in design, few moving parts, and speed, our rapid roll doors increase productivity. We pride ourselves in building superior, reliable products that maximize safety, productivity and savings for our customers. Companies count on Albany due to our decades of experience, superior performance and products, and the global leader in entrance automation that stands behind us, 4Front Engineered Solutions.

DOOR CHARACTERISTICS

Door Dimensions	Minimum: 3'W x 7'H Maximum: 18'W x 18'H
Operating Speeds	Opens: Up to 96 in/sec Closes: Up to 48 in/sec
HS8010P Wind Resistance	Static Load: Up to 95 mph at 7'W Static Load: Up to 23.89 psf at 7'W
HS8020P Wind Resistance	Static Load: Up to 115 mph at 18'W Static Load: Up to 34.52 psf at 18'W
Sensing Devices	Photo eye Wireless reversing edge
Door Panel	Curtain comes standard with 27 oz PVC fabric panel. Optional colors include blue, black, grey, green, red, orange, yellow, brown and white. Optional clear, full width vision section (15" or 31" tall) Optional clear windows (24" x 24")

DOOR COMPONENTS

Side frames	Galvanized steel structural channel side guides Inner side guides in Polyethylene (PE-UHMW 1000)
Soft Bottom Edge	No rigid components. Includes wireless reversing sensor
Manual Egress	Hand crank

CONTROL & DRIVE SYSTEM

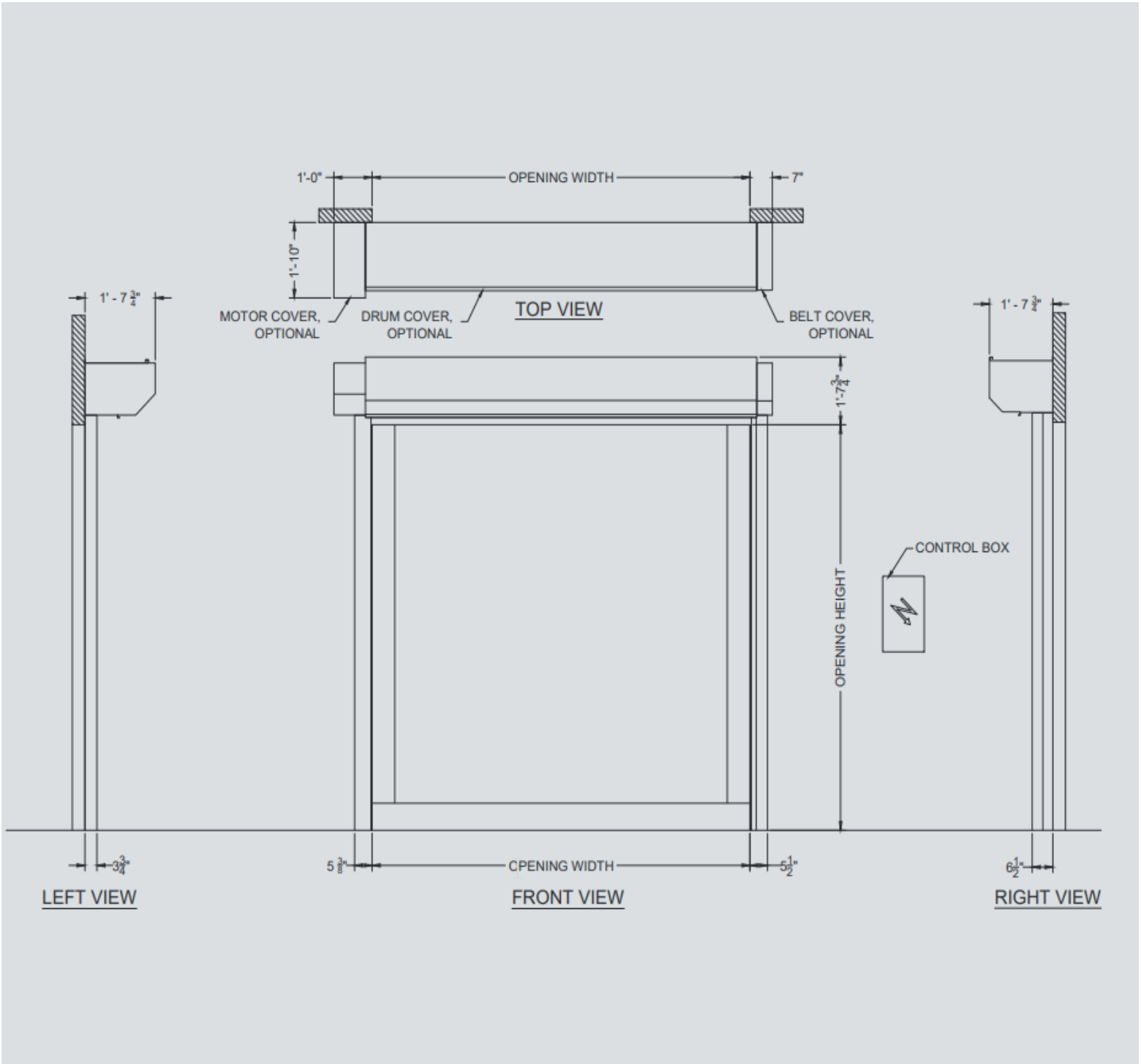
ACS100	Standard, variable frequency drive with soft start / soft stop and encoder
Input Voltage	Available: 110V, 208V, 230V, 460V, 575V Motor IP65, 2.0-Hp, Single phase, 3 phase, 50/60 Hz Protection NEMA 4, UL/cUL listed
Warranty Terms	Motor & Gear Box: Five years parts & labor Control Panel: One year

We offer various options and actuation devices
*Optional



HS8010P & HS8020P

STAND UP AGAINST HIGH WINDS AND PRESSURE



Founded in 1895 as Albany International in the USA, Albany began manufacturing the first high-performance roll door in 1963. Today, Albany is the world leader in the production of high-speed and high-performance doors. Providing sophisticated products that are designed for a wide range of applications in various industries, Albany remains the original high-performance roll-up door.

Door specifications and technical data subject to change without notice.

© ASSA ABLOY. ALL RIGHTS RESERVED. Part of ASSA ABLOY.

ALBANY

935 Campus Drive
Mundelein, IL 60060
P: 1-800-459-1930
www.albanydoors.us