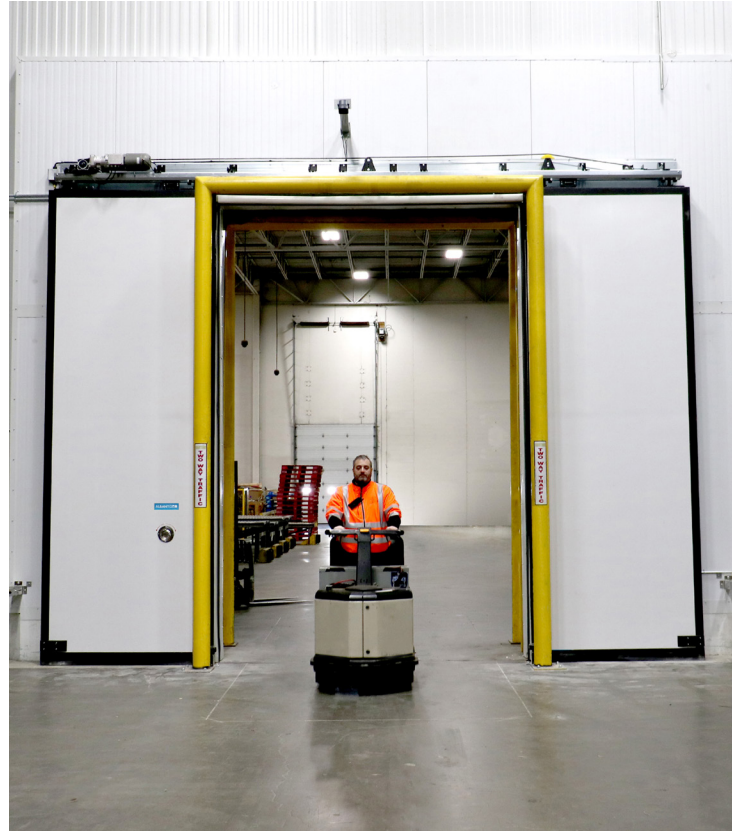


# RS2400 Freezer

## Product Specifications

**DESIGN HIGHLIGHTS**

- Opening Speed Up To 125" Per Second
- 4" Panel Thickness – R17, with a Compressible Close Cell EVA Foam Core
- White Thermoplastic Flexible Panel Outer Shells
- Polyurethane Elastomer Perimeter Panel Edges
- Full Perimeter Adjustable Gasket Seals
- Heavy-Duty Galvanized "Down and In" Track System
- Manual Panel Release Capability
- NEMA 4X Panel with Self Diagnostic Controller with HMI Display and E-Stop Button Included
- Standard Open/Close/Stop through HMI
- Time Delay Closing
- Self Regulating Heat Around 3 Sides Door Opening (Sides/Top)
- (2) Sets Of Through Beam Reversing Photo-Eyes
- Five-Year/One Million Cycle Limited Warranty on Mechanical Components And Door Controller
- Five-Year/Unlimited Cycle Warranty on EVA Foam Panels



*Representative image only*

*4Front Engineered Solutions reserves the right to change specifications and designs without notice and without incurring obligations.*

**PROJECT INFORMATION**

JOB NAME \_\_\_\_\_

ADDRESS \_\_\_\_\_

GENERAL CONTRACTOR \_\_\_\_\_

DISTRIBUTOR \_\_\_\_\_

MODEL \_\_\_\_\_ QUANTITY \_\_\_\_\_

**CERTIFIED FOR CONSTRUCTION**

BY \_\_\_\_\_

COMPANY \_\_\_\_\_

ADDRESS \_\_\_\_\_

DATE \_\_\_\_\_

### CONTROLLER OPTIONS

- 460V - 3 PH
- 230V - 1 PH (size dependent)
- 230V/208V - 3 PH
- 575V - 3 PH
- NEMA 4X SS Control Box
- NEMA 4X Composite Control Box
- NEMA 4X Sloped Control Box
- Heated Control Box
- Heated Motor
- Heated Track
- Remote Mounted HMI

### ACTIVATION OPTIONS

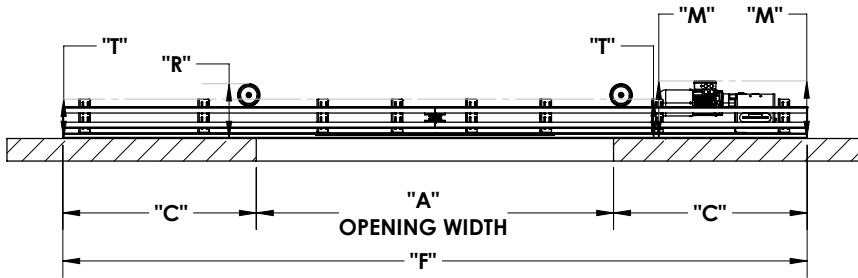
- Remote Mounted Push Button NEMA 4X
- (2) remote Mounted Pull Cord NEMA 4X
- (2) Motion Detectors
- (1) Extended Motion Detector Mounting Bracket
- (1) Loop Detector
- Other \_\_\_\_\_

### HEATER AND BLOWER OPTIONS

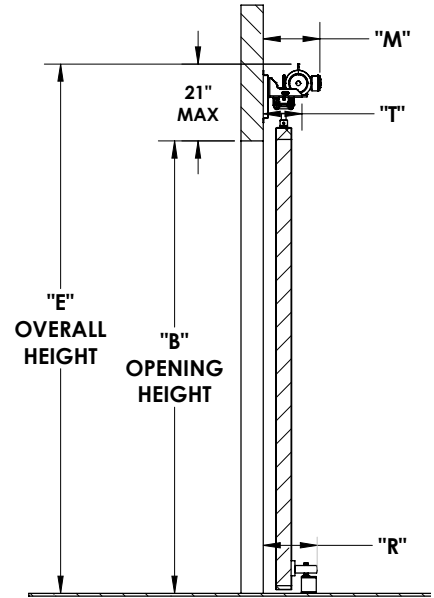
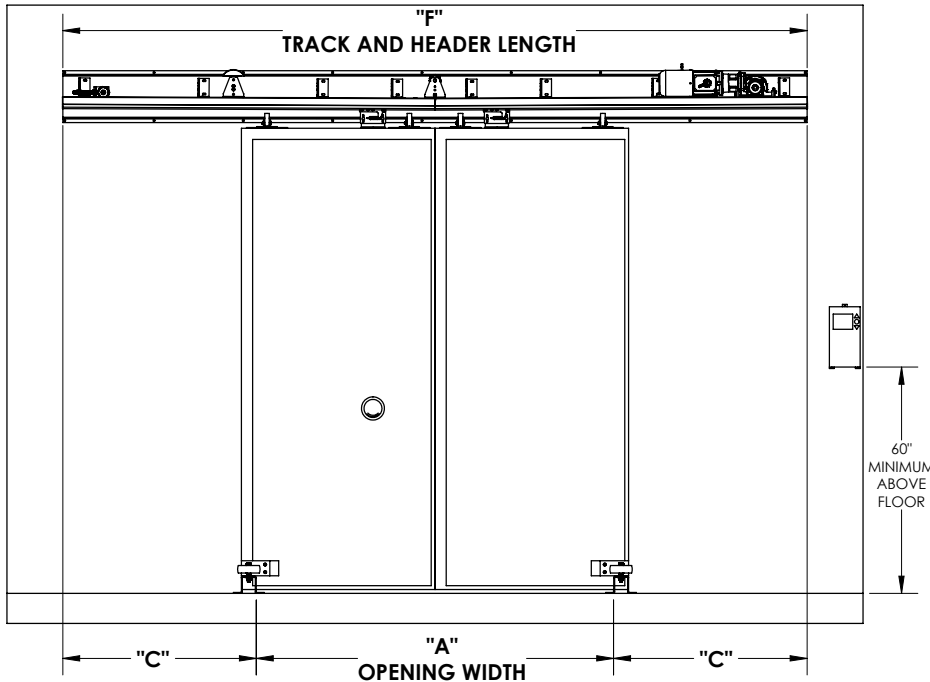
- Side Mounted 18" fans with 42" arm
- Full Width Heated Defrost Blower
- Selector Switch - On No Heat/On Heat/Off
- Single Control Panel To Allow Single Power
- Drop For Door and Blower

### DOOR OPTIONS

- 6" Panel Thickness
- 8" Panel Thickness
- 10" Panel Thickness
- HDPE Mirror Image Header
- HDPE Mirror Image Face Casings
- Breakaway Floor Hardware
- Galvanized Rail and Operator Cover
- SS Rail and Operator Cover
- Blue Panel Color
- White Panel Color (standard)



	"M"	"T"	"Rs"	"Rc"
4" PANEL (R17)	15.25	10.5	14.5	11.75
6" PANEL (R25)	16.25	10.5	16.5	13.75
8" PANEL (R32)	17.75	13.75	18.5	15.75



**Albany**  
 13850 101st Street, Suite B  
 Kenosha, WI 53142  
 866.836.7659  
 www.albanydoors.us