



# MCC VectorControl™

Fast, Flexible & Reliable



# **MCC**VectorControl (Modular Custom Controller) Positioning Statement



The **MCC VectorControl** has proven itself as one of the most reliable controllers in the high speed door industry.

After **years** of impeccable performance in Europe the **MCC** is now available in the U.S.

**Speed, simplicity, elegance, performance, expandability and precision;** it's hard to believe that Albany could put so much into something so small.

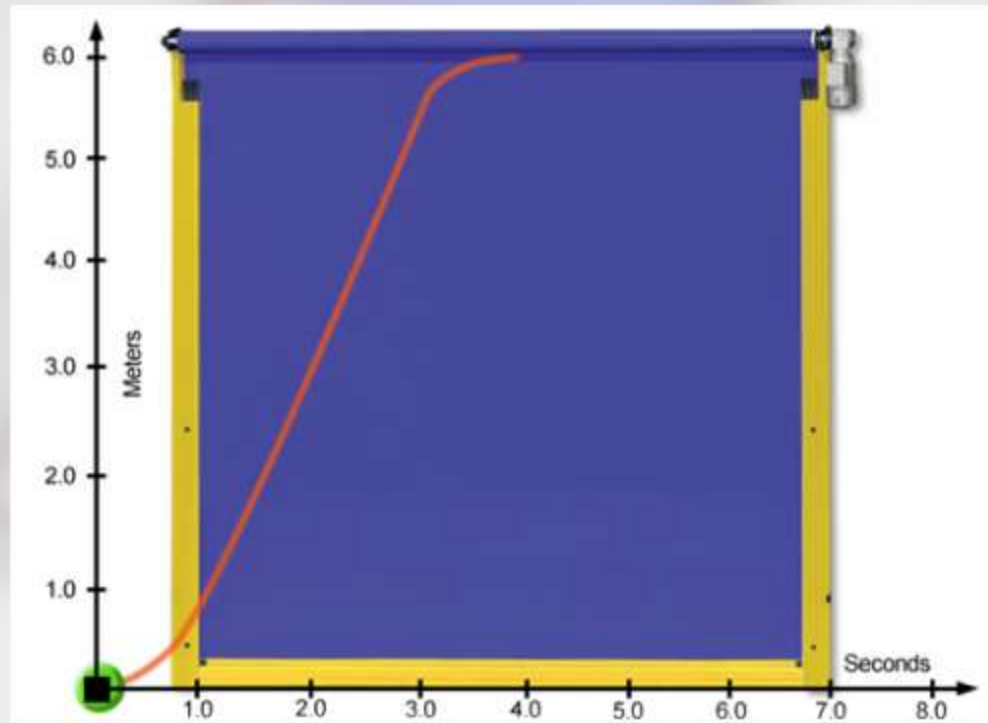
# Features & Benefits

Customer Needs	MCC Feature	Customer Benefits
<u>Performance</u>	Vector Control technology with variable frequency soft-start soft-stop performance	Incredibly smooth, fast, and quiet high speed door performance. Decreases wear on door components and lowers maintenance costs
<u>Customizable</u>	Programmable	Customize door use to customer needs
<u>Expandable</u>	Modular design	Add options to existing MCC and expand door capabilities
<u>Easy to Use &amp; Troubleshoot</u>	Interactive display gives step-by-step instructions and keeps complete door history	Set-up or troubleshoot door easily and quickly limiting downtime. Review door history to gauge performance and troubleshoot
<u>Easy to Install</u>	Pre-wired plug & play	Minimize workflow interruptions
<u>Reliable</u>	99.5% proven reliability rate	Proven performance means no controller headaches
<u>Cost Savings</u>	VectorControl uses only the power needed for optimal performance. Wireless Safety System. Quick installation.	Energy efficient VectorControl saves money. Wireless system minimizes coil cord maintenance issues. Less time to install means limited downtime.
<u>Convenient Access</u>	Stylish and compact two piece unit	Main unit mounts next to the drive while small 2-3/4" x 6-7/8" interactive display mounts practically anywhere around the door

# Features & Benefits

## VectorControl Technology

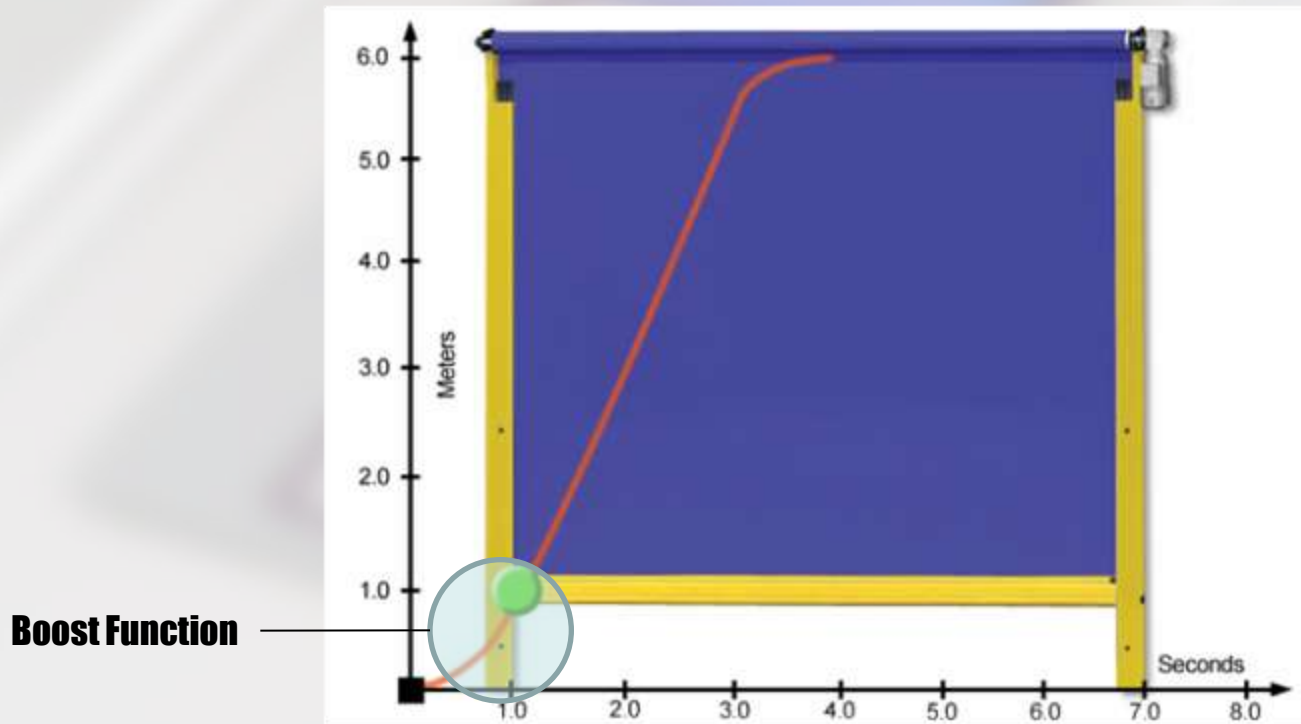
- Continuously monitors and adjusts current for optimal drive performance
- Smooth door movement – S-Curve and can cycle more frequently
- Boost function maximizes capability of the drive for smoother more powerful acceleration, also increases ability to handle temporary wind loads



# Features & Benefits

## VectorControl Technology

- Continuously monitors and adjusts current for optimal drive performance
- Smooth door movement – S-Curve and can cycle more frequently
- Boost function maximizes capability of the drive for smoother more powerful acceleration, also increases ability to handle temporary wind loads

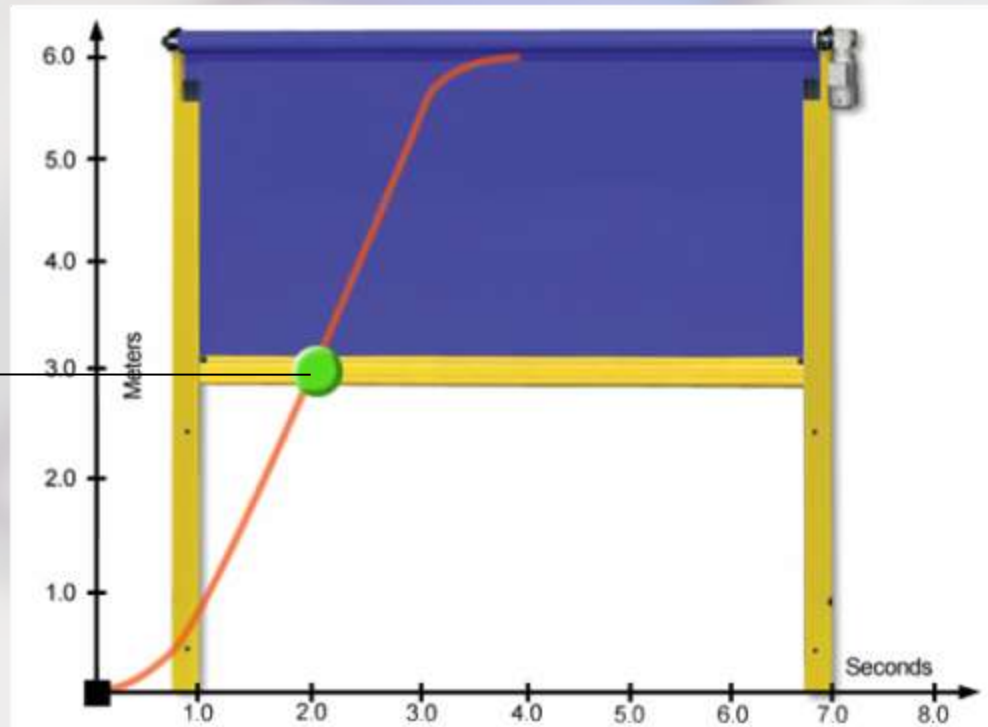


# Features & Benefits

## VectorControl Technology

- Continuously monitors and adjusts current for optimal drive performance
- Smooth door movement – S-Curve and can cycle more frequently
- Boost function maximizes capability of the drive for smoother more powerful acceleration, also increases ability to handle temporary wind loads

**Smooth Acceleration**

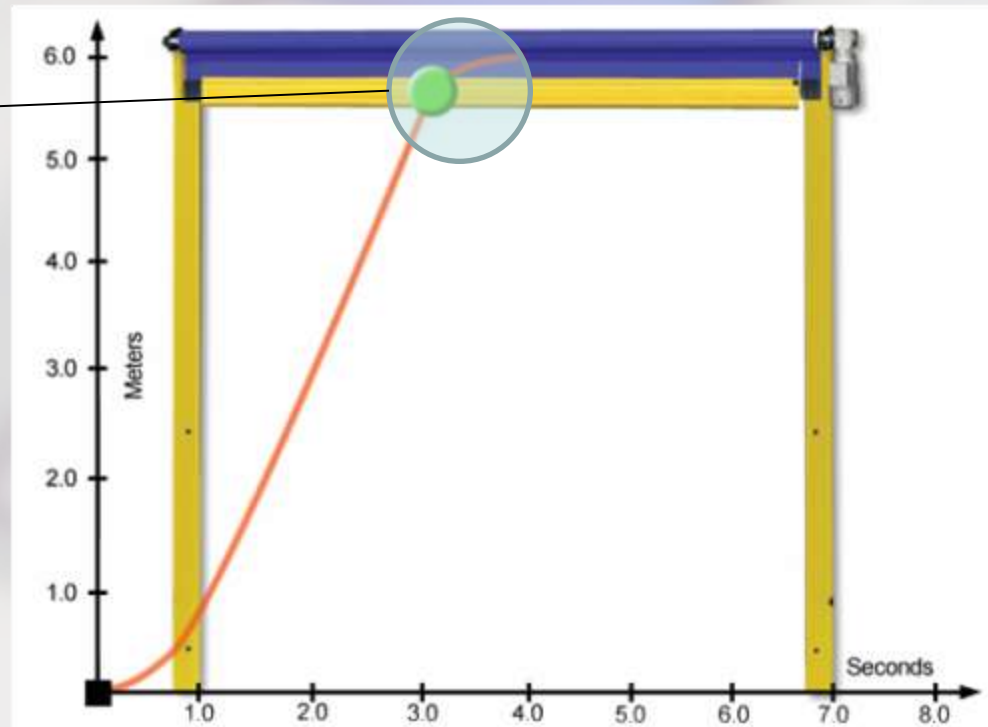


# Features & Benefits

## VectorControl Technology

- Continuously monitors and adjusts current for optimal drive performance
- Smooth door movement – S-Curve and can cycle more frequently
- Boost function maximizes capability of the drive for smoother more powerful acceleration, also increases ability to handle temporary wind loads

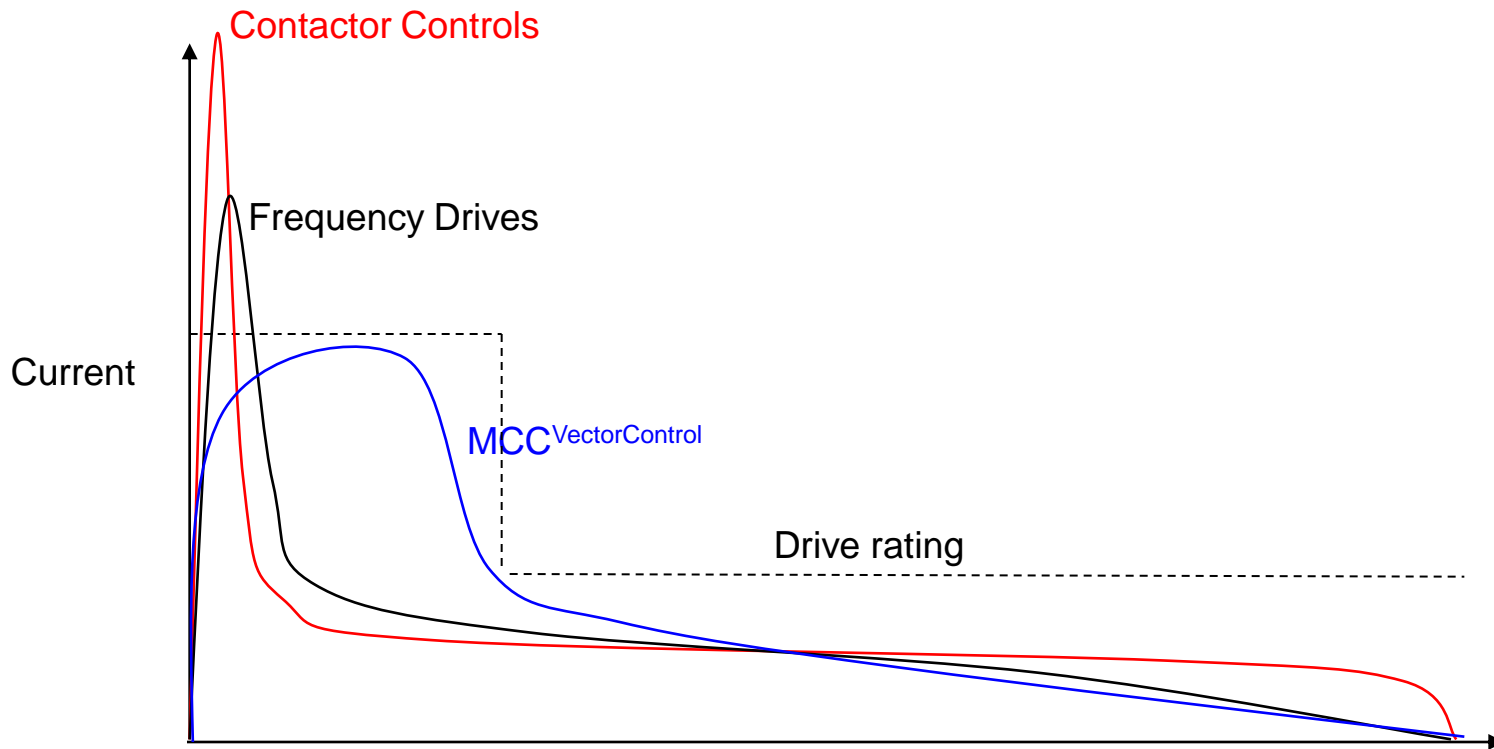
**Deceleration  
to Soft Stop**



# Features & Benefits

## VectorControl Technology

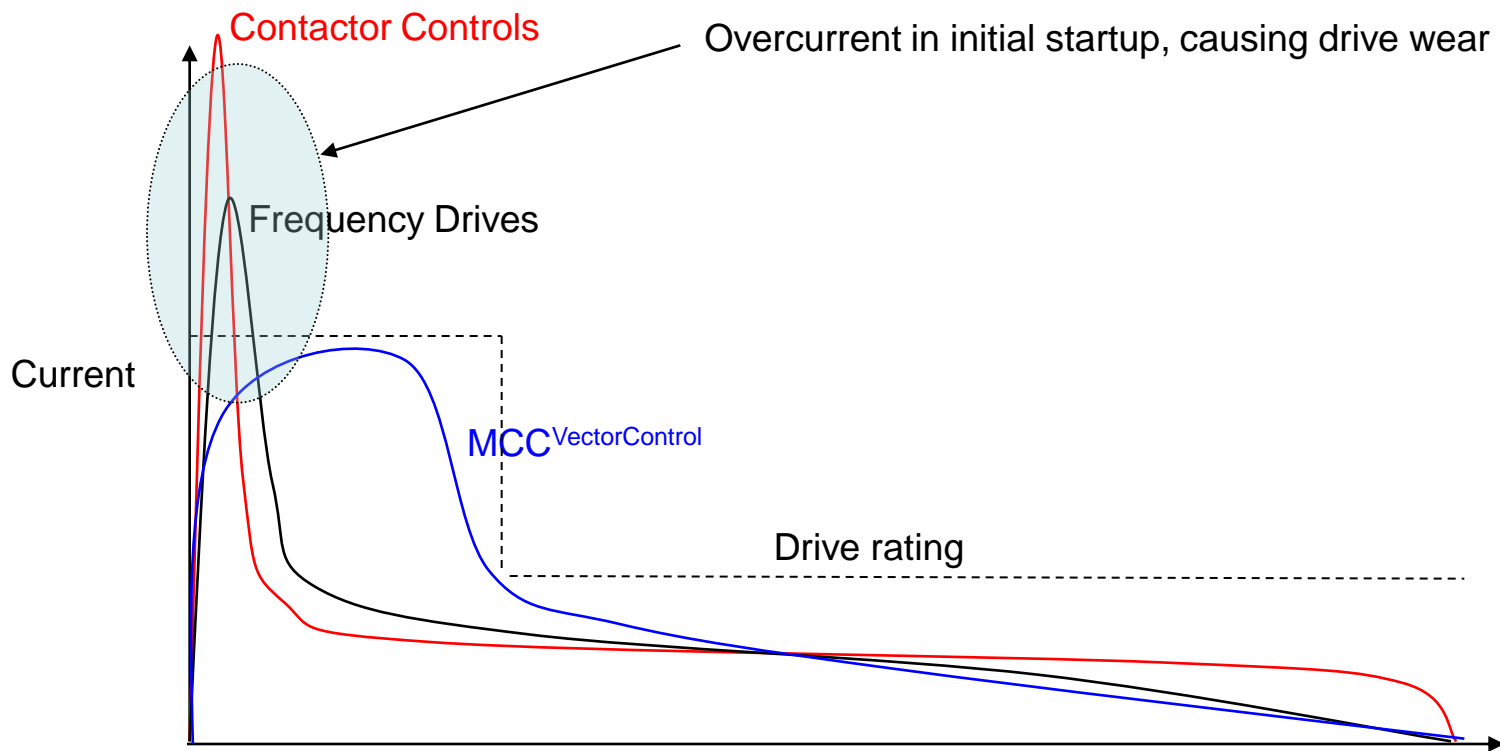
### Boost Function



# Features & Benefits

## VectorControl Technology

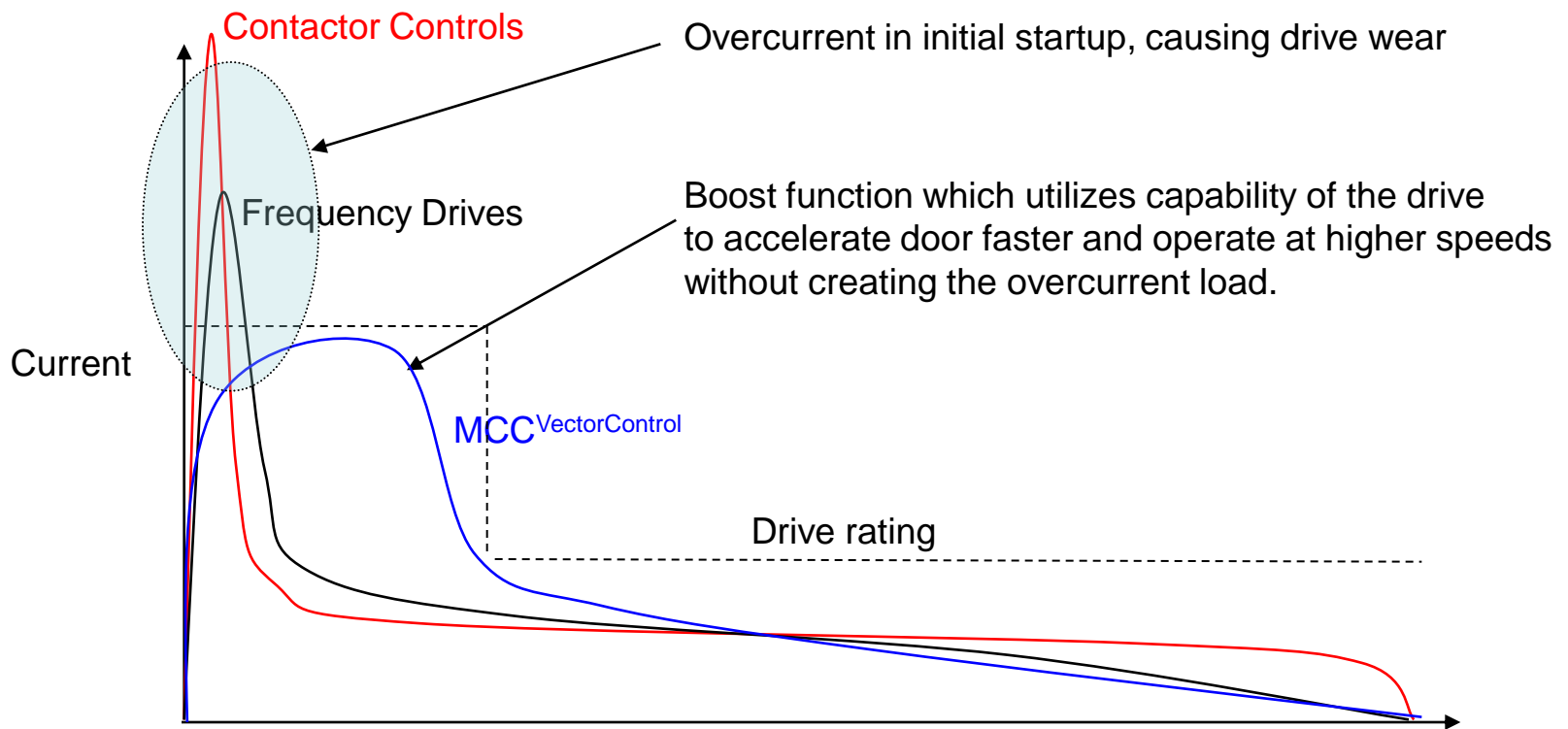
### Boost Function



# Features & Benefits

## VectorControl Technology

### Boost Function



## Features & Benefits

### Customizable

- Eight standard inputs, two standard outputs
- Flexibility to configure and program 6 additional field programmable I/Os, as either inputs or outputs
- Programmable PLC allows for custom configuration



# Features & Benefits

## Expandability

### Combibox (*combination box*)

- Includes interactive display and rotary disconnect
- Offers additional capabilities such as I/Os, floor loops and lights, etc.

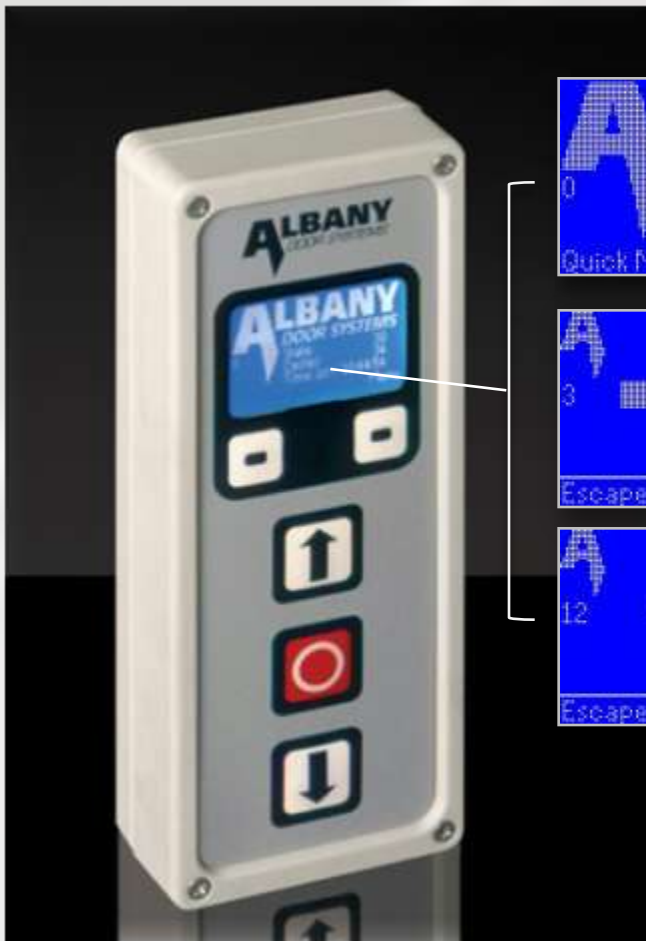


### Separate Rotary Disconnect



# Features & Benefits

## Easy to Use & Troubleshoot



ALBANY  
DOOR SYSTEMS  
0 State: 1234  
Cycles: 12345678  
Time: 01:00:00  
Quick Menu Menu

A Setup  
View Status  
3 Maintenance  
Error Log  
Event Log  
Escape Enter

A Motor Torque  
Next Service  
12 Door Serviced  
Keyboard test  
Endurance test  
Escape Enter

- 128 x 64 Graphical display
- Simple menu guidance
- Simple to put door in operation, setup or after power outage
- Service interval announcement
- Simple troubleshooting – similar to a copy machine display with easy to follow instructions
- Keeps complete door history for reference and analysis
- Inquiry of the I/O's
- English, German, Swedish, French, Spanish – selected when ordered

# Features & Benefits

## Easy Installation

### Typical Door Installation

- Control Panel mounted far from drive unit
- External wiring from panel to drive
- Length of wiring and routing varies
- No pre-wired plug-and-play options
- Simple push button controls
- Limited graphical interface

Installation time varies, difficult to plan

### Door with MCC Installation

- Pre-wired at factory for Plug and Play connection
- MCC mounted below the drive
- Short cable lengths
- Multi-line scrollable Graphical User Interface (GUI)
- Programming of limits at the GUI
- Startup instructions on the GUI

\*Average time of installation is two hours

\* Specific applications may affect installation times

# Features & Benefits

## Reliable

Thousands of units have been sold in Europe with a **99.5%** reliability rate.



# Features & Benefits

## Cost Savings

- **VectorControl Technology** saves on energy costs by only using the amount of power needed to run the door at optimal levels.
- **Quick and easy installation** limits the amount of downtime during the door installation process.
- **Interactive display** quickly walks the user through restarting procedures or troubleshooting instructions minimizing costs associated with downtime.
- **Wireless safety system** eliminates costly coil cord maintenance issues.

# Features & Benefits

## Convenient Access

**Traditional control panels are bulky, ugly and take up space.**

- The MCC's main unit is plug-and-play mounted at the drive eliminating excessive conduit and wiring that traditional control panels need.
- The stylish 2-3/4" x 6-7/8" interactive display can be mounted practically anywhere around the door. It is made of heavy-duty polycarbonate and is perfect for applications that have limited space requirements.



For more information contact:

**Craig Jones**

Vice President of Sales and Marketing  
Albany Door Systems

*Office: 770-338-5048*

*Fax: 262-364-2601*

*Cell: 561-644-0005*

*Email: [craig.jones@albint.com](mailto:craig.jones@albint.com)*

# MCC VectorControl™

Fast, Flexible & Reliable

